



Free-Lace Scarf

Working with Mokuba Water-Soluble Stabilizer



Mokuba Free Lace Sheets come with two types of water-soluble sheets. One sheet is a non-woven fabric with an adhesive side that is protected by a backing sheet and the other sheet is clear film.

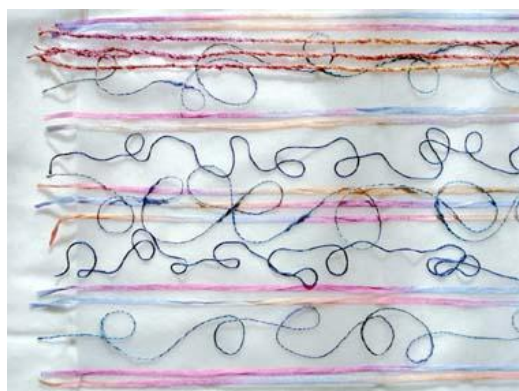
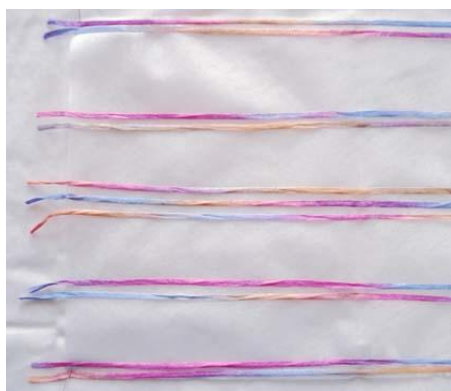
To create a free-lace scarf, begin by gathering a selection of pretty ribbons and novelty yarns that coordinate well. Just remember that everything that you use must be able to be rinsed in water. Remove the backing paper from the adhesive side of the water-soluble stabilizer sheet. Arrange the novelty yarns and ribbons in a pattern on the adhesive side of the



water-soluble sheet.

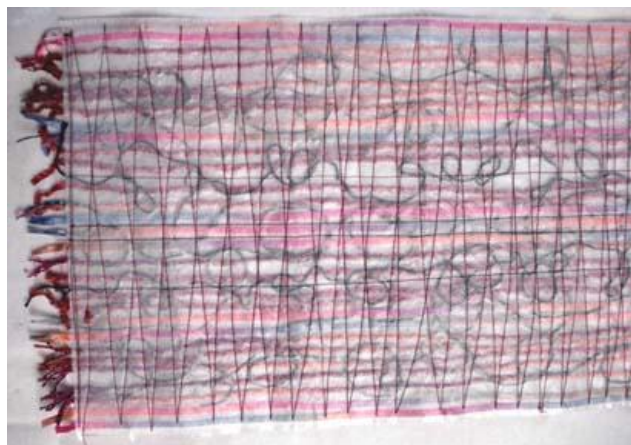
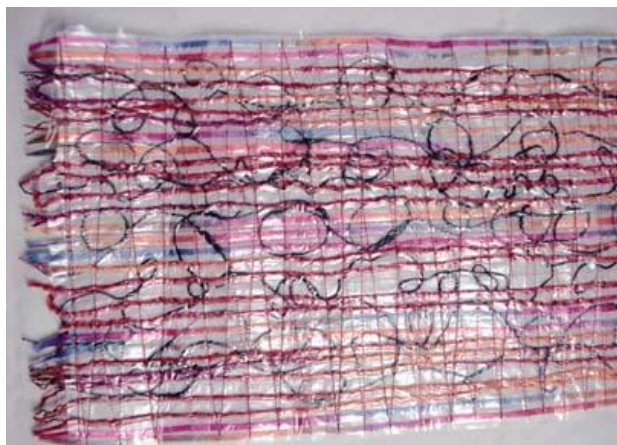
You may simply want to lay strips of ribbon and yarns along the length of the stabilizer sheet until the sheet is almost completely covered to create your scarf. For the scarf pictured here some threads were laid down in a squiggly pattern under and over the long parallel strips of ribbon and yarn.

Remember that with any pattern you create, you will be able to see both sides when the scarf is finished. If you make a layered design like the one pictured here that has a layer of stripes and a layer of squiggles, you want to think about what the front and back of the scarf will look like.



Once the entire water-soluble sheet is covered with yarns and ribbons take the clear film sheet and put it on top. The exposed areas of adhesive hold the clear film sheet in place in a nice water-soluble sandwich. The next part involves a lot of random machine stitching.

The entire Mokuba sandwich needs to be thoroughly machine stitched. The stitching holds the yarns and threads together when the water-soluble sheets are rinsed away. The easiest way to stitch a "free lace" piece is to stitch a tight grid over the yarn/ribbon composition, but you may prefer zigzags or swirly patterned stitching. Make sure that your stitching is dense enough to hold all the yarns and ribbons together in the design that you created. It is helpful to hold the piece up to the light so that you can more easily see where you have stitched and what areas needed more stitching. Metallic and other shimmery threads can be quite troublesome to stitch with so it will be easier for your first piece to use plain cotton or polyester threads.



After the stitching is complete, rinse the piece several times in a basin of water. The rinse water will be fairly thick with the dissolved stabilizer so it is best to dispose of the rinse water in a toilet, not in your sink. If the piece dries and still feels stiff then you will need to rinse it again. When dry, iron the scarf carefully to flatten it out. Your scarf is ready to wear!

